

BIM Courses

For Architects & Civil Engineers

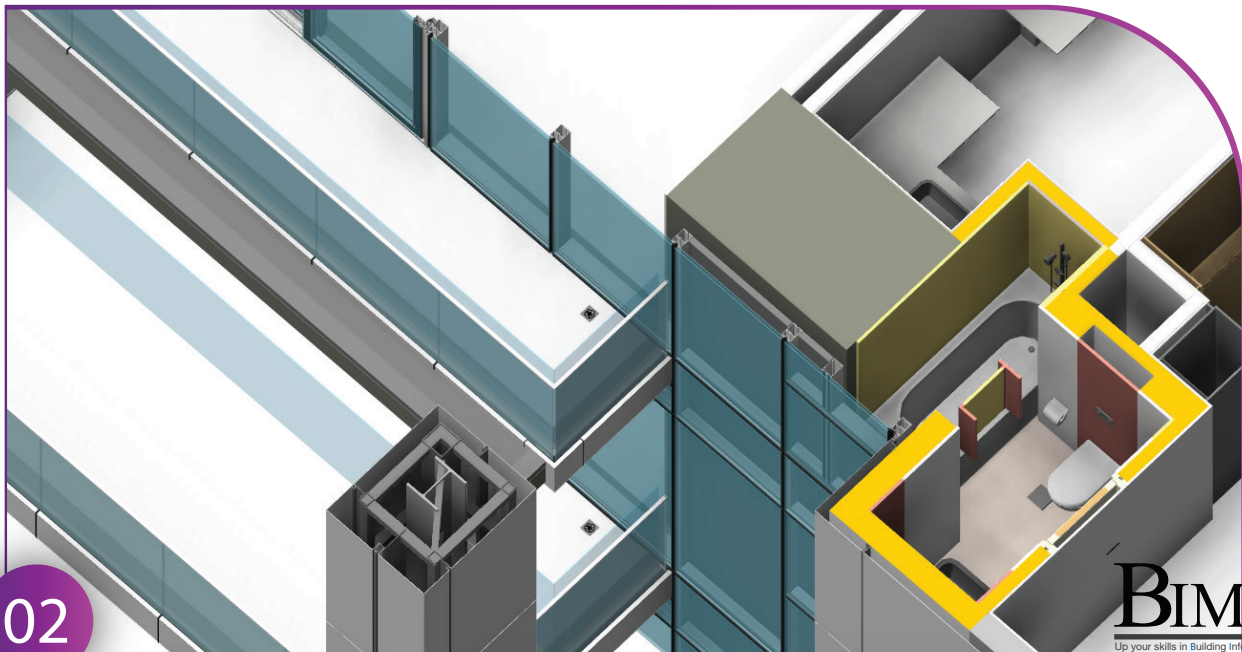
Get trained by professionals, become a BIM Master, and grow your skills in the AEC industry.

[Join us](#)

Powered by,  **DDG** | **BIM SERVICES**

Course Highlights

- ▶ Boost **BIM** (Building Information Modelling) skills.
- ▶ Master 4+ **BIM** software programs and industry workflows.
- ▶ Fast-track your career in 3 months with international projects.
- ▶ Access live webinars with industry experts.
- ▶ Cultivate personal development.
- ▶ Practice **BIM** interviews and craft appealing CVs for more interview opportunities.
- ▶ Benefit from 100% job placement assistance at renowned global **BIM** firms.
- ▶ Earn the industry-recognized certificate from **BIM Cafe**.

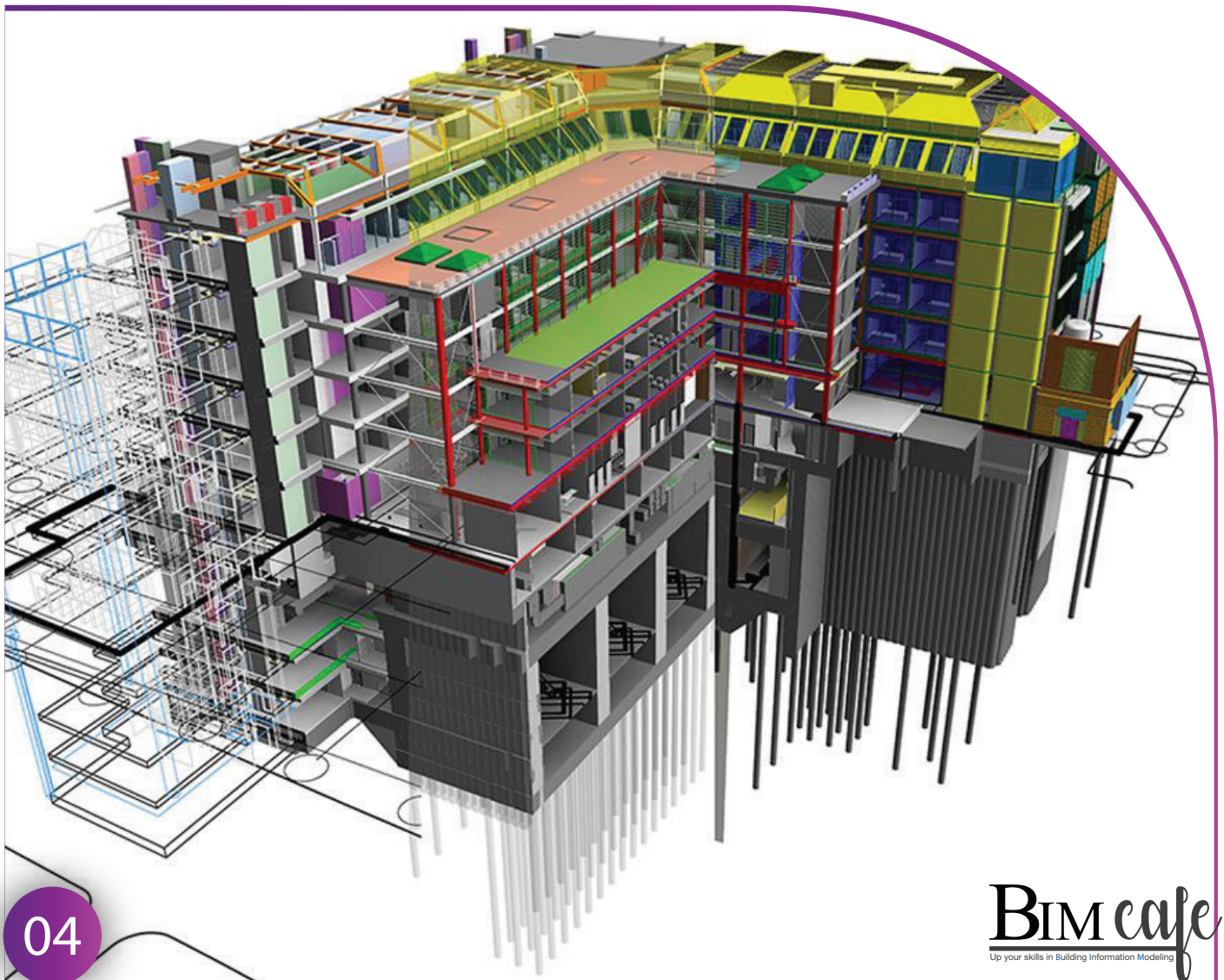


Contents

Why choose BIM?	04
Who can attend our course?	06
Courses we offer	07
About us	08
Software syllabus	15
Project overview	18
Certification	20
Google reviews	21
Fee structure	22
Contact	24

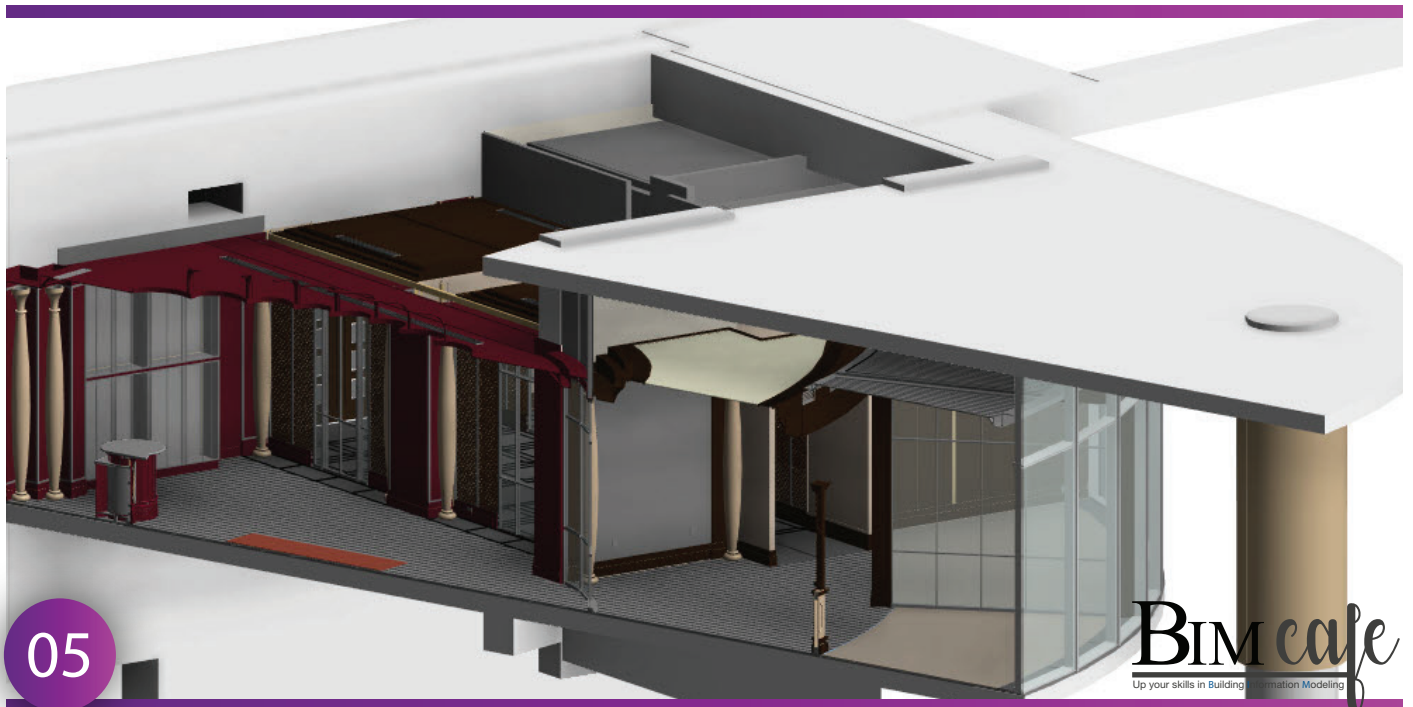
WHY CHOOSE BIM?

Students choose **BIM** for their careers because it helps them work smarter in construction and design. With **BIM**, they can use cool technology to create 3D models of buildings and collaborate better with others. It's like a high-tech toolbox that makes projects more efficient and saves money. Plus, companies really like hiring people who know how to use **BIM** because it makes the whole building process smoother. So, students see **BIM** as a great way to be tech-savvy and have a cool job in the world of construction.



IN AEC PROJECTS, BIM IMPROVES

- ▶ Team collaboration
- ▶ Design accuracy
- ▶ Clash detection and coordination
- ▶ Visualization and communication
- ▶ Cost estimation and analysis
- ▶ Construction sequencing and planning
- ▶ Facility operation and maintenance
- ▶ Sustainability and energy analysis
- ▶ Documentation and record-keeping



WHO CAN ATTEND OUR COURSE?

- ▶ Architects (B Arch / M Arch)
- ▶ Civil Engineers (M Tech, B.E/ B Tech, Diploma or ITI)
- ▶ Interior Designers

SOFTWARE AND TOOLS WE TEACH



Revit



LUMION



AUTODESK
AutoCAD



SketchUp



AUTODESK
Navisworks Manage



Dynamo



AUTODESK®
BIM 360™



AUTODESK
ReCap Pro

COURSES WE OFFER

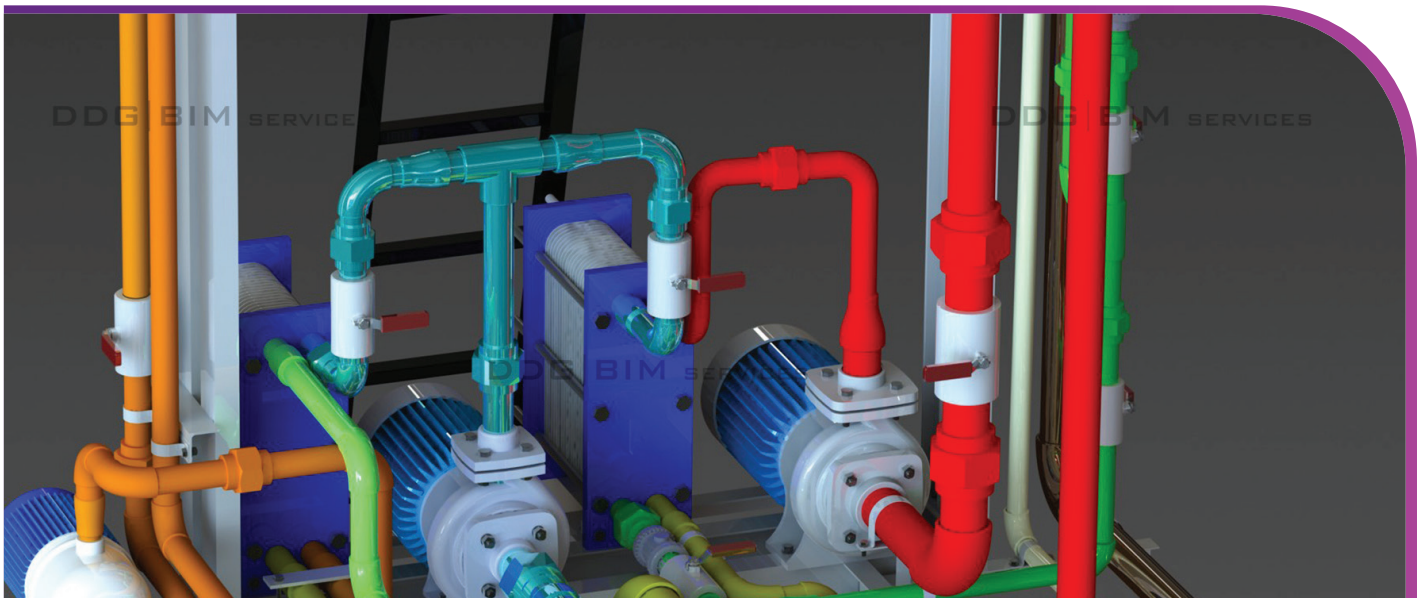
- ▶ Courses for Architects & Civil Engineers
- ▶ Course for Interior Designers



ABOUT US

Welcome to **BIM Cafe**, the premier project-based BIM training center nestled in Ernakulam, Kerala. Our parent company, **DDG BIM** (Design Development Group) Services, situated at Infopark in Ernakulam, is an Engineering Service provider primarily serving the Middle East and Europe. We're deeply committed to providing top-notch education and guidance in **BIM** because of our vast experience managing successful global **BIM** projects through **BIM**.

Whether you are an aspiring **BIM** professional looking to start your career or an industry veteran seeking to upskill, **BIM** Cafe is your partner in achieving your goals. Join us on your journey toward becoming a proficient **BIM** practitioner, and let's build a smarter, more sustainable future together.





COURSES FOR ARCHITECTS & CIVIL ENGINEERS

1. BIM Basic Course (2 Months)
2. BIM Professional Course (3 Months)
3. BIM Master Course (6 Months)

1. BIM Basic Course (2 Months)

Topics Covered

- ▶ Introduction to **BIM**
- ▶ Introduction to **BIM** LOD (Level Of Development)
- ▶ Introduction to **BIM** Software
- ▶ Parametric family creation
- ▶ Clash detection and coordination
- ▶ International project **LOD 200** (Metric Unit)
- ▶ **BIM** software and tool detailed training (Arch & Structural)

Software & Tools used

Revit

Navisworks Manage

AutoCAD

BIM 360

2. BIM Professional Course (3 Months)

Topics Covered

- ▶ Introduction to **BIM**
- ▶ Introduction to **BIM** LOD (Level Of Development)
- ▶ Introduction to **BIM** software's, process & its benefits of **BIM**

- ▶ 3D modeling and visualization
- ▶ How to read and understand the contract/design drawings inputs
- ▶ Parametric family creation
- ▶ Construction documentation
- ▶ Cost estimation and quantity take-off
- ▶ Clash detection and coordination
- ▶ **BIM360** tool explanation
- ▶ Live International project (Imperial and Metric) training (LOD 200 and LOD 300)
- ▶ Detailed **BIM** software training (Arch & Structural)

Software & Tools used

Revit

Navisworks Manage

AutoCAD

BIM 360

ReCap Pro

3. BIM Master Course: (6 Months)

Topics Covered

- ▶ Introduction to **BIM**
- ▶ Introduction to **BIM** LOD (Level Of Development)
- ▶ Introduction to **BIM** software's
- ▶ BIM process, and benefits of **BIM**
- ▶ 3D modeling and visualization
- ▶ How to read and understand the contract/design drawings inputs
- ▶ Parametric family creation
- ▶ Interior design fit-out detailing and modeling
- ▶ Construction documentation
- ▶ Cost estimation and quantity take-off
- ▶ Clash detection and coordination

- ▶ **BIM** data management
- ▶ **BIM** for facility management
- ▶ Detailed **BIM360** tool explanation
(Project Setup, Project Administration, Document Management, Model, Co-ordination, Issue Tracking, RFI (Request for Information) Management, Submittal Management, Collaboration and Communication, Mobile Access)
- ▶ International live project training (3 Nos)
(LOD 200, LOD 300, LOD 350)
- ▶ **BIM** job training and mock interviews
- ▶ **BIM** software training (Arch & Structural)

Software & Tools used

Revit

Navisworks Manage

AutoCAD

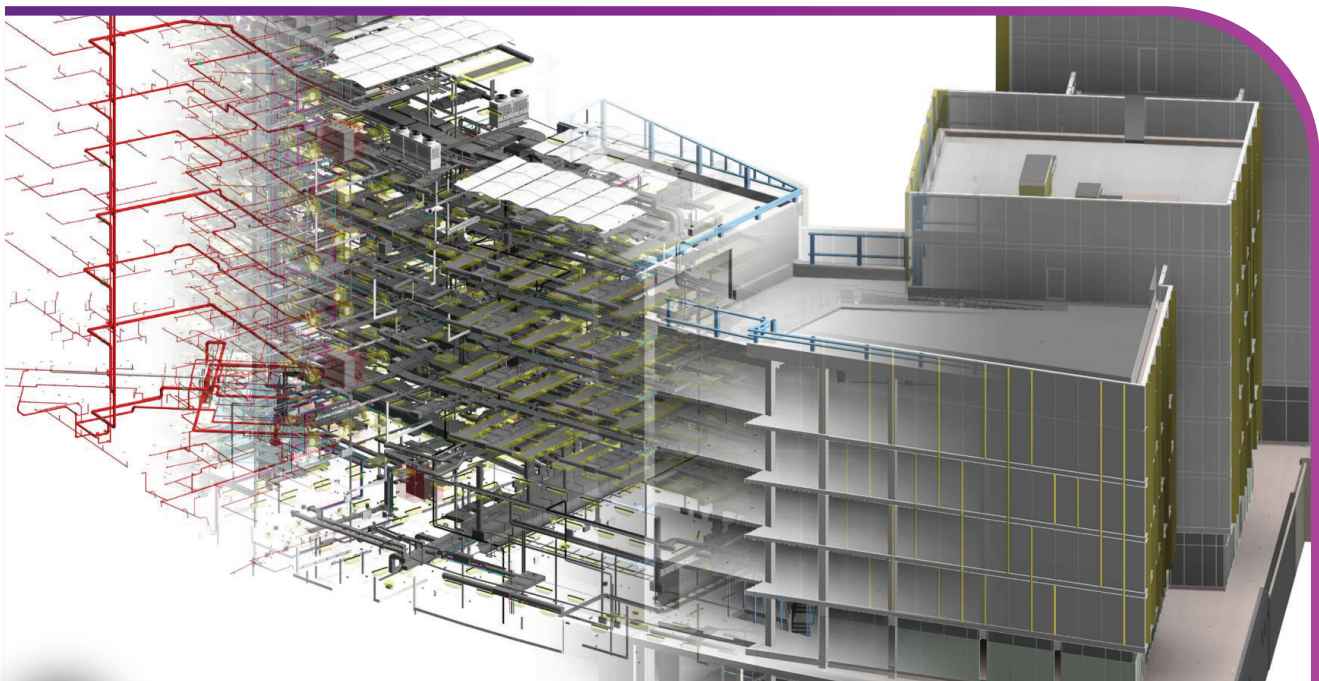
BIM 360

Sketchup

ReCap Pro

Lumion

3ds Max



4. BIM Coordinator Professional Training (14 Days)

(Architecture Only)

Who Should Attend?

It is targeted at BIM practitioners who already have relevant practical experience in BIM projects, meet the relevant academic requirement

Topics Covered

- ▶ Introduction to **BIM**
- ▶ Roles and responsibilities of **BIM** coordinator
- ▶ Execution of **BIM** uses for single and multidisciplinary coordination in **BIM** project (3D coordination & design review)
- ▶ Assist in **BIM** related meetings
- ▶ Digital information management
- ▶ Common Data Environment (CDE)
- ▶ Data quality control & Assurance across various stages
- ▶ Model checking including clash avoidance strategies and clash detection resolution methodologies
- ▶ Audit reporting overview of common CDE platform

COURSE FOR INTERIOR DESIGNERS

Who Should Attend?

- ▶ Interior designers seeking to upgrade their skills and embrace the latest industry trends.
- ▶ Architects or engineers who are interested in expanding their knowledge of BIM for interior design fit-out projects.
- ▶ Construction professionals aiming to improve coordination & collaboration with interior design teams.
- ▶ Students or graduates pursuing a career in interior design or Architecture.

Topics Covered

- ▶ Introduction to **BIM**
- ▶ Introduction to **BIM** LOD (Level Of Development)
- ▶ Introduction to **BIM** software's
- ▶ BIM process, and benefits of BIM
- ▶ How to use **BIM** in interior design projects
- ▶ 3D modeling and visualization
- ▶ How to read and understand the contract/design drawings inputs
- ▶ Parametric family creation
- ▶ ID fit-out modeling and drawings
- ▶ Millwork modeling and drawings
- ▶ **BIM** procurement in ID fit-out
- ▶ Material take-off
- ▶ **BIM 360** tool explanation

Software & Tools used

Revit

AutoCAD

Navisworks Manage

Lumion

Sketchup

COURSE PLAN

3 Months Course Plan	
Softwares	Duration(In days)
Revit MEP	40
AutoCAD	10
Navisworks Manage	5
BIM 360	5
Projects	
Project 1 (LOD 200)	1 Month
Project 2 (LOD 300)	
Total working days	90 Days (3 Months)

6 Months Course Plan	
Softwares	Duration(In days)
Revit Architecture	35
3ds Max	24
SketchUp	10
AutoCAD	10
Revit Structure	5
Navisworks Manage	4
Lumion	3
Projects	
Project 1 (LOD 200)	1 Month
Project 2 (LOD 300)	
Project 3 (LOD 350)	1 Month
Total working days	156 Days (6 Months)

SOFTWARE SYLLABUS

1. AutoCAD

Introduction | Touring the interface Opening- Viewing & saving drawings | Creating basic geometry | Understanding drawing units | Maintaining accuracy | Using specialized drawing commands | Making primary modifications | Selecting geometry -Refining geometry | Organizing Drawings-Adding general annotations | Dimensioning | Generating & managing reusable content | Accessing specialized tools | Plotting | Creating properly sized annotations on plotted drawings | Sharing data | Conclusion.

2. Revit Architecture

Creating walls | Basic wall | Curtain Wall | Stacked Wall | Placing doors, windows and components | Family creation | Grouping & filtering | Circulation stair | Ramp | Dimensions and annotations | Creating floors, ceilings and roofs | Landscaping | Working with views | Creating project details and schedules | Preparation of sheets and plotting | link project & collaboration | Import and export | Rendering and walkthrough | Work sharing.

3. Revit Structure

Setting up the project | Grids & columns | Foundations | Steel Framing | Floors & slabs | Reinforcing | Steel brace frames | Stairs ramps and slopes | Detailing & annotating | Schedules and tagging | Trusses | Project management | The steel tabs | Conclusion.

4. Navisworks Manage

Project review in Navisworks | The Navisworks file system | Navigating in a model | Working with viewpoints | The review tabs | Dealing with objects | Sorting and grouping | Clash detection.

5. Lumion

Controlling the camera | Importing models | Creating camera paths | Configuring the environment | Building a realistic landscape | Lighting | Adjusting materials | Using build mode | Adding effects | Rendering videos and still photos | Creating panoramas.

6. Sketch Up

Adjusting Sketchup settings | Creating components | Installing Sketchup plugins | Creating sweeps and revolves | Importing CAD drawings | Modelling a house | Adding walls, doors, and windows | Adding the roof | Creating textures | Applying materials to objects | Landscaping | Modelling interior details | Creating and saving styles | Creating plans and sections | Geolocating the model.

7. Recap Pro

Understand the fundamentals of reality capture and the role of Recap Pro in the process | Import and manage point cloud data from various sources | Use Recap Pro tools for cleaning & organizing point cloud data | Create 3D models & visualizations from point clouds | Implement best practices for working with large and complex point cloud datasets | Utilize advanced features, such as registration & target-based alignment | Export data from Recap Pro for use in other Autodesk applications.

8. BIM 360

Design Collaboration | File uploading | Publishing | Managing | Acquire coordinates systems and publishing | Collaborate using BIM 360 Docs | Implement version control | Document management.



PROJECT OVERVIEW

We provide opportunities to work on international projects from countries where **BIM** is a must-follow practice. Getting involved in these projects helps you learn a lot about **BIM** standards, and how projects are set up that vary from country to country. Students get practical experience by using what they've learned in real-world projects.

Highlights of the **BIM** Professional Course

During the first two months of our three-month course, students will dive into learning **BIM**. At the same time, they'll be working on projects that cover both architectural and structural services. Once these projects are done, students will take on the final project that specifically focuses on Levels Of Development (LOD) 200 and LOD 300.

Additional Aspects of the Course

Mock Interviews:

The course incorporates simulated interview sessions to boost students' preparedness for real-world professional interactions.

Resume Construction:

As part of the course, students receive guidance on creating impactful resumes, ensuring they present themselves effectively to potential.

Levels Of Development (LOD) in BIM

Levels Of Development (LOD) in **BIM** are like turning a simple idea into a detailed plan. Starting at LOD 100 is like making a rough sketch – you capture the basic concept. As you progress to LOD 200, 300, and beyond, it's like adding more details and specifics to your plan. Finally, at LOD 500, it's like having an ultra-detailed, ready-to-build blueprint for a project. So, LODs help us move from basic ideas to highly detailed plans in a step-by-step process.



LOD 200



LOD 300



LOD 400

CERTIFICATION

Upon successful completion of the course, candidates will receive an industry-recognized certificate from BIM Cafe. Adding this certificate to your portfolio will help your possibility to get your dream job easily.

Course Completion Certificate



Project Completion Certificate



GOOGLE REVIEWS



Adarsh Sajeew
1 review

★★★★★ a month ago
I found this BIM training in training at this institute. The



2



Athul Vijay
4 reviews

★★★★★ a month ago

I recently did the BIM professional course through online. amazing learning experience. The teaching was excellent and very easy to understand. The best part of the course was that it made the entire course very engaging and helped me understand. What I felt different was the personal attention they gave. Whenever I had doubts, I could ask them through WhatsApp anytime and they would also clear my doubt by using anydesk and helped me. The instructor's knowledge and experience in BIM. Overall, I would highly recommend BIMCafe.



somin m sajan
1 review

★★★★★ 3 months ago
Experience with BIM cafe has been wonderful. Truly a friendly staff and flexible class schedule.



Sahmi
2 review

★★★★★

Recie
resp
The
wit



Anto Raphael
4 reviews

★★★★★ 5 months ago

Best place to learn BIM. They emphasize industry oriented training which is much helpful for students to know the real world scenario of bim industry. Highly recommend for those who are interested to start a career in BIM.



1



JyothiLakshmi C S
4 reviews

★★★★★ 3 months ago

I have a good experience at the institution. Syllabus oriented and experience is an advantage. BIMCafe



2



Jude IJ
4 reviews

★★★★★ a week ago

NEW

Excellent training provided for those in evening helps me learn without taking all doubts clearly. Frequent assignments



1



Anagha M Basheer
2 reviews

★★★★★ a month ago

I recently completed a BIM course at BIM Cafe and I must say the experience was exceptional. The trainers were highly knowledgeable and provide support. I would recommend this institute to anyone looking to enhance their BIM skills.



1



vivek vv
3 reviews

★★★★★ a month ago

I had completed my BIM training course at BIM Cafe. Training was very good, gave me more hands-on experience and I gained a very good knowledge. I got assistance from the management also. The trainers were flexible, and they made a good effort to ensure that the material was properly covered other concepts which might be touched on in job interviews. The emphasis in the training I received.



1



abhijith ts
1 review

★★★★★ 3 months ago

A great platform to learn new advanced BIM. I do really recommend everyone to make use of it.



1



THOUFEEK THAJUDEEN

5 reviews · 1 photo

★★★★★ 5 months ago

It's one of the greatest experiences I've ever had. I like the way they teach and understand and also like the friendly atmosphere. The teaching is clear and calm, teaching everything in a simple way. [More](#)



BIM cafe
Up your skills in Building Information Modeling

FEE STRUCTURE

Online Fees

For BIM Basics Course (2 Months)

Price - ₹ **17,999** /- + GST

For BIM Professional Course (3 Months)

Price - ₹ **34,999** /- + GST

For BIM Master Course (6 Months)

Price - ₹ **59,999** /- + GST



Offline Fees

For BIM Basics Course (2 Months)

Original Price- ₹ 60,000 /-

Discounted Price - ₹ 34,999 /- + GST

For BIM Professional Course (3 Months)

Original Price- ₹ 80,000 /-

Discounted Price - ₹ 49,999 /- + GST

For BIM Master Course (6 Months)

Original Price- ₹ 1,30,000 /-

Discounted Price - ₹ 85,000 /- + GST



BIM for Interior Designers (2 Months)

Original Price- ₹ 50,000 /-

Discounted Price - ₹ 29,999 /- + GST

BIM Coordinator Professional Training (14 Days)

Original Price- ₹ 20,000 /-

Discounted Price - ₹ 14,999 /- + GST

Want to work on Live Projects?

Join our 6-Month course!

3 Months BIM Training

3 Months Live projects @ DDG BIM, Infopark

BIM Master Course (3+3 Months)

3 months of training at BIM Cafe

3 months internship on a live project at DDG BIM Service

Original Price- ₹ 1,50,000 /-

Discounted Price - ₹ 1,25,000 /- + GST

CONTACT

Sarath P G -   +91 9778 135 014

Locations :

Kochi

3rd Floor, Esperanza, Seaport Airport Rd.
Thuthiyoor Chittethukara, Kakkanad,
Kerala 682037

UAE

Passport Building, Al Falah Street
Abu Dhabi, UAE

 www.bimcafe.in

 www.bimtraining.online